





Exchanging Data between CEView and SteepleChase Using OPC

Introduction

This technical note explains how to configure an OPC (*OLE for Process Control*) Interface between InduSoft Web Studio (as the OPC Client) and Entivity's SteepleChase® (as the OPC Server).


-  **Notes:** This publication was written using InduSoft Web Studio (*IWS*) version 4.4 with Service Pack 2 and SteepleChase version 5.2 running on the Windows® 2000 with Service Pack 3 operating system. Newer versions of any component should be compatible, but the screen captures (figures) and the configuration interfaces may be slightly different than the ones used in this document. For more information about configuring each component, consult the manufacturer's documentation.
-  In addition, the instructions in this technical note are based on the *OPC Specification*, which is a non-proprietary technical specification that defines a set of standard interfaces based on Microsoft's OLE/COM technology. Applying the OPC standard interface makes interoperability between automation/control applications, field systems/devices, and business/office applications possible.
- For additional information about OPC, visit the www.opcfoundation.com web site.

Most SCADA/HMI packages provide an OPC Interface (Client and/or Server), which makes it possible to exchange data with other OPC-compliant software packages. InduSoft Web Studio provides both an OPC Client and OPC Server modules that are compatible with *OPC Specification* versions 1.0a and 2.0. This OPC Interface enables IWS to exchange data with any other OPC-compliant system running on the same computer (using COM) or on a remote computer (using DCOM), through a TCP/IP connection. InduSoft provides an OPC Interface for each run-time version running on a Microsoft Windows NT®/2000 or Windows® CE v3.00 platform.

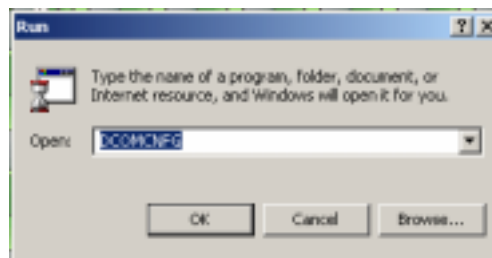
Configuration

Use the following procedure to configure IWS as an OPC client and SteepleChase as an OPC server:

1. Install InduSoft Web Studio and SteepleChase VLC (*Visual Logic Controller*) on a Windows NT/2000 station.
2. Create a SteepleChase application. (If necessary, refer to the manufacturer's documentation for instructions.)
3. Create an InduSoft Web Studio application.

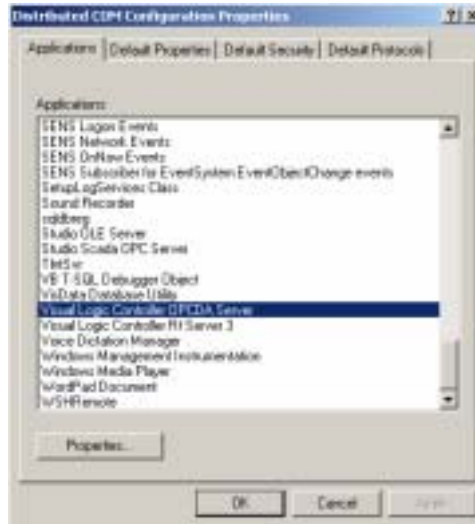
 **Note:** To configure an OPC Client Worksheet in IWS using the OPC Browser, the SteepleChase program must be running.


4. Test the IWS application locally.
5. If the OPC communication is working properly, download the IWS application to the remote computer.
6. Register the SteepleChase OPC server on the Remote CE unit using instructions in the *RemoteOPC.doc* file.
7. Adjust the default DCOM configuration of the SteepleChase OPC server as follows.
 - a. Select **Start** → **Run**.
 - b. When the *Run* dialog displays, type **DCOMCFG** into the *Open* field and click **OK**.

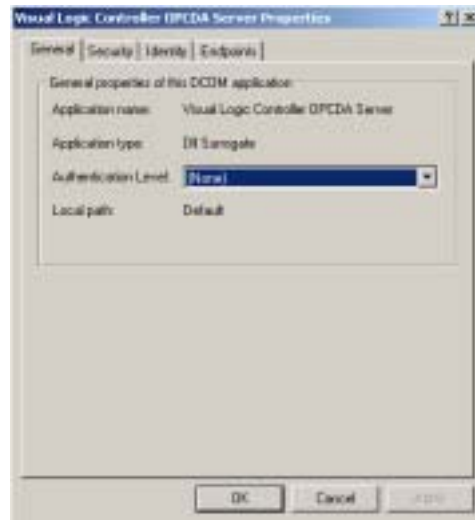


The *Distributed COM Configuration Properties* dialog displays.

- c. Select Visual Logic Controller OPCDA Server from the *Applications* list in the *Distributed COM Configuration Properties* dialog.



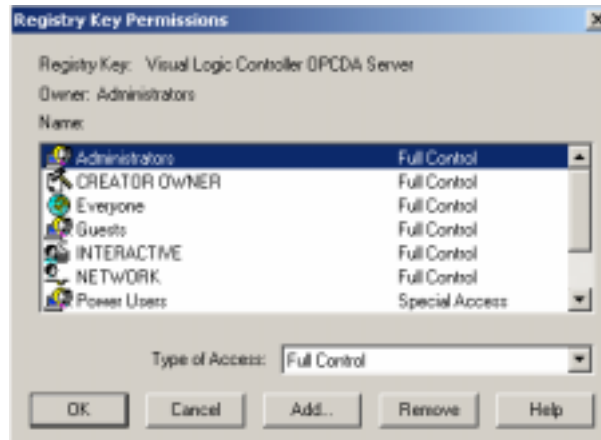
- d. Click the *Properties* button to open the *Visual Logic Controller OPCDA Server Properties* dialog.
- e. On the *General* tab, click the *Authentication level* combo box button  and select *(None)*.



- f. Select the *Security* tab and click (*enable*) the Use default access permissions, Use default launch permissions, and Use custom configuration permissions radio buttons.



- g. Click the Edit button in the *Use custom configuration permissions* section to open the *Register Key Permissions* dialog.



- h. In the *Register Key Permissions* dialog, select *Everyone / Full Control* from the *Name* list and click OK.

- i. When the *Visual Logic Controller OPCDA Server Properties* dialog displays, select the *Identity* tab. Click (*enable*) The interactive user radio button, and then click OK to close the dialog.



- 8. Finally, start the IWS application on the Remote CE unit and the IWS application should communicate with the SteepleChase OPC server.



Revision History

Revision	Author	Date	Comments
A	Bryan Morgan	Sep/11/2002	▪ Initial revision