




InduSoft Web Studio and CEView Licensing

Contents

Introduction	2
Product Versions	3
Execution Modes	4
Protection Types	7
License Settings	8
Installing Hardkey Licenses for InduSoft Web Studio	9
<i>Installing a New License</i>	9
<i>Upgrading the Current License</i>	9
Installing a SoftKey License for InduSoft Web Studio	12
<i>Installing a New License</i>	12
<i>Upgrading the Current License</i>	14
Installing a SoftKey License for CEView	17
<i>Installing or Upgrading a License (Locally)</i>	17
<i>Installing or Upgrading a License (Remotely)</i>	20
Revision History	23

Introduction

This document describes the procedures for licensing the InduSoft® Web Studio (*IWS*) and CEView™ products. InduSoft Web Studio runs on Microsoft® Windows® NT/2000/XP (*WinNT/2K/XP*), and is the workbench software (development station) used to configure and debug applications for Windows NT®/2000/XP or Windows CE (*WinCE*). In addition, *IWS* is the runtime software for WinNT/2K/XP and CEView is the runtime software for WinCE. The information provided in this document is valid for InduSoft Web Studio v5.1 or later.

 **Note:** InduSoft provides CEView for most platforms supported by the WinCE operating system. The CEView runtime files for each platform are stored in the development station during the installation of InduSoft Web Studio. You can use the remote management tools in *IWS* to download CEView runtime files to the WinCE device. See the *InduSoft Web Studio User Guide and Technical Reference* for detailed information about these two products.

Product Versions

InduSoft Web Studio and CEView share the same version number, according to the following syntax:

X.Y+SPWW

For example:

- InduSoft Web Studio v5.0+SP1
- CEView v5.0+SP1

Where:

- X: Represents the Family version. The Family version changes only when there are major enhancements in the product's technologies/concepts.
- Y: Represents the Sub-version: The Sub-version changes when there are minor enhancements and/or new features in the product.
- WW: Represents the Service Pack. The Service Pack changes when add-on packages must be installed to accomplish the following:
 - Upgrade files for the version previously installed
 - Fix bugs in the product (showstoppers and no-workarounds)
 - Provide minor enhancements before releasing the next version of the product

Each Service Pack release supersedes the previous Service Pack release. For example, SP2 includes all the contents of SP1 and all newly upgraded files, bug fixes, and enhancements. SP3 includes all the contents of SP2 and all new upgraded files, bug fixes, and enhancements and so on.

⚠ Caution: Both InduSoft Web Studio and CEView can execute applications built in previous versions of the product. However, older versions of IWS and CEView *cannot* execute applications built or modified in newer versions of the product.

⚠ Important: Each license is issued for a specific *Family version* and *Sub-version (X.Y)*, and is valid only for that version (including its Service Packs). However, a license is *not* valid for a newer *Family version* or *Sub-version* of the product. When you install a new version of InduSoft Web Studio or CEView, you must upgrade your current license to the new version being installed. If you are installing a Service Pack only, you are not required to upgrade your license.

Execution Modes

InduSoft Web Studio and CEView support the following Execution Modes:


Execution Mode	InduSoft Web Studio	CEView
Evaluation Mode	✓	✗
Demo Mode	✓	✓
Licensed for Engineering Only	✓	✗
Licensed for Runtime Only	✓	✓
Licensed for Engineering + Runtime	✓	✗

✓ = Apply; ✗ = Does NOT Apply

- Evaluation Mode: Enables all features of the product (engineering and runtime).

When you install InduSoft Web Studio for the first time on a computer, the product runs for 40 (forty) hours in *Evaluation Mode*. This evaluation period (40 hours) includes any time in which you are running any product module (engineering or runtime). You can use this evaluation period continuously or not (for example: 10 hours a day for 4 days, 5 hours a day for 8 days, 10 hours a day for 3 days plus 5 hours a day for 2 days, and so on).


After running the product for 40 hours, the Evaluation Mode terminates and IWS automatically activates the *Demo Mode* until you install a valid license (*Hardkey* or *Softkey*). You cannot reactivate Evaluation mode—even if you uninstall, and then reinstall the product on your computer.

 **Note:** Each version of the product has its own Evaluation Mode period, which is independent of every other InduSoft Web Studio version. For example, if you have IWS version 5.1 installed on your computer and running in Demo Mode (see following description) because your Evaluation Mode period expired (and you have not installed a license). If you install IWS version 5.2 on the same computer, the 5.2 version will begin its own Evaluation Mode period (40 hours) and the 5.1 version IWS will continue running in Demo Mode only.


- Demo Mode: Enables you to download or upload applications to remote stations, and to run applications for testing and/or demonstration purposes. You can execute runtime tasks and use the debugging tools (*LogWin* and *Database Spy*), but they are shut down automatically after running continuously for two hours. You can restart the Demo Mode again and run for another two hours, and so on. You *cannot* create or modify screens, worksheets, or application settings in Demo Mode.


The following menu options are available in Demo Mode:

- File menu: Open Project and Exit options
- View menu: Toolbars, Status Bar, Zoom, and Library options
- Project menu: Settings, Status, Run Application, Stop Application, Send Project to Target, Execution Environment, and Logon options
- Tools menu: Register Controls, Convert Resolution, Verify Application, and System Information options
- Help menu: [*All Options*]

 **Note:** If the Evaluation Mode period expires, and you do not install a valid license on your computer (for example, your license was issued for an older version of IWS), IWS will run in *Demo Mode* only.

- Licensed for Engineering Only: Enables all workbench options for an unlimited time. This mode also allows you to execute the runtime tasks and debugging tools (*LogWin* and *Database Spy*) for 72 hours continuously. After the 72-hour period expires, these tasks shut down, but you can restart them again and run for another 72 hours, and so on. You can use this license for development and testing only.
- Licensed for Runtime Only: Allows you to run all runtime and debugging tools (*LogWin* and *Database Spy*) for unlimited time, but you cannot create or modify screens and/or worksheets. The following menu options are available in *Runtime Only* mode:
 - File menu: Open Project and Exit options
 - View menu: Toolbars, Status Bar, Zoom, and Library options
 - Project menu: Settings, Status, Run Application, Stop Application, Send Project to Target, Execution Environment, and Logon options
 - Tools menu: Register Controls, Convert Resolution, Verify Application, and System Information options
 - Help menu: [*All Options*]
- Licensed for Engineering + Runtime: Enables all engineering tools, runtime tasks, and debugging tools (*LogWin* and *Database Spy*) for an unlimited period of time.

 **Important:** In addition to the *Execution Mode*, each license sets other restrictions, such as the *Product Types* supported for the license. See the *Product Type* section for more information.

 **Note:** The Execution Environment tools are always available regardless of *Execution Mode*, which means you can always use IWS to upload or download files from and to remote stations (such as remote WinCE devices) using the *Execution Environment* dialog (Project Execution Environment).

To see which Execution mode you are running, select Help About from the IWS interface main menu bar. The *About InduSoft Web Studio* window opens and provides information about the current Execution Mode. If you are running in *Evaluation Mode*, the Execution Mode field displays how much evaluation time remains (see the following figure).



Protection Types

InduSoft Web Studio and CEView support the following Protection Types:

Protection Type	InduSoft Web Studio	CEView
Hardkey (LPT1 or USB interface)	✓	✗
Softkey	✓	✓

✓ = Apply; ✗ = Does NOT Apply

- Hardkey: The *Hardkey* is an encapsulated chip that **must** be physically connected to the parallel port (*LPT1*) of the local computer on which InduSoft Web Studio is installed. Optionally, IWS v6.0 (or higher) supports USB Hardkeys as well.

Each Hardkey provides one license, which cannot be shared simultaneously with more than one copy of IWS in the network. Using a Hardkey for the LPT1 port of your computer does not prohibit you from connecting any device to the parallel port of the computer (for example a printer)—it should be electronically transparent to the devices connected to the parallel port. For example, you can connect a printer cable to the Hardkey while the Hardkey is connected to the computer. However, you may encounter problems if you install more than one Hardkey (for different products) on the same parallel port. The IWS license resides in the Hardkey; therefore, if you connect the *Hardkey* to another computer, you are transferring the license to this other computer. When using the Hardkey for USB interface, the USB port where you connect the Hardkey cannot be used to connect any other device simultaneously.

⚠ **Caution:** You must use caution when installing or removing the Hardkey from the parallel port of the computer. We strongly recommend that you turn off the computer and disconnect it from the power supply before installing or removing a Hardkey.

- Softkey: When you install InduSoft Web Studio (or CEView), the program generates a unique code (*Site Code*). You must send this Site Code to your software vendor, who will then generate a license code (*Site Key*) to match your Site Code. The Site Key installs the license on your computer (or WinCE device).

📌 **Note:** When using a *Softkey*, the license is recorded in the non-volatile memory of the computer (or WinCE device) where you installed the product. If this device is damaged, the license is lost.

⚠ **Caution:** The Softkey license is based on some unique information from your computer (or WinCE device). Therefore, if you remove any hardware adapter from your computer (e.g.: HardDisk, Network adapter, and so forth), your license may be lost. It is strongly recommended moving the Softkey license to another location before modifying the hardware configuration from your computer. Consult your software vendor for further information.

⚠ **Caution:** Softkey licenses for IWSv6.0+SP1 (or newer) is not supported under Windows NT operating system. When running IWSv6.0+SP1 (or newer) under Windows NT, it is required to use Hardkey instead of Softkey.

License Settings

Each license sets the following parameters:

- **Product Type:** Specifies which features and restrictions are enabled for the application (such as maximum number of tags supported, maximum number of drivers running simultaneously, and so on). Consult your software vendor about which Product Types are available and which features are enabled for each type.
- **Execution Mode:** Specifies the following three options
 - **Engineering Only:** Configures and runs the application for testing during development only. You cannot use this license as a long-term, run-time license.
 - **Runtime Only:** Runs the application for unlimited time. You cannot use this license to develop or modify the application.
 - **Engineering + Runtime:** Configures, modifies, and runs the application for unlimited time.
- **Number of Web Thin Clients supported simultaneously by the Server:** Specifies how many Web Thin Clients are supported. You can connect one or more Web Thin Clients to the server simultaneously (for an additional charge), but the license installed on the server must support these additional Web Thin Clients.

Options for adding Web Thin Clients are as follows:

- **Server for InduSoft Web Studio (WinNT/2000/XP):** Connects 0 (*No Web Thin Clients*), 1, 2, 4, 8, 16, 32, 64, 128, or 256 Web Thin Clients to the server simultaneously.
- **Server for CEView (WinCE):** Connects 0 (*No Web Thin Clients*), 1, 2, 4, or 8 Web Thin Clients to the server simultaneously.
- **Version Supported:** When you generate a license, the license will specify the product version it supports.
- **Duration:** When generating Softkeys, the license can be issued for a limited period of time (from 1 up to 99 days), since the day when the license was installed. When this period of time expires, the license is no longer valid and the product runs in Demo Mode until a new valid license is installed. The duration option is NOT available for Hardkey licenses.

Installing Hardkey Licenses for InduSoft Web Studio

This section explains how to install and upgrade Hardkey licenses for IWS (for Win NT/2000/XP).



Installing a New License

To install a new IWS license, use the following steps:


1. Install InduSoft Web Studio on your computer.
2. Connect the Hardkey to the parallel port (*LPT1*) or to the USB interface from the computer where you installed IWS.

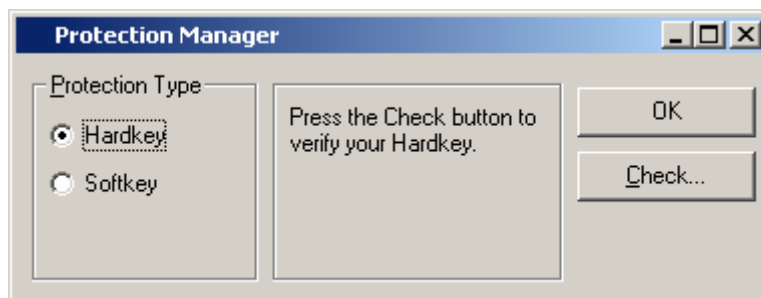
⚠ Caution: Use caution when installing or removing a Hardkey from your computer's parallel port. We *strongly* recommend that you turn off the computer and disconnect it from the power supply before installing or removing the Hardkey.

3. Run *InduSoft Web Studio*.

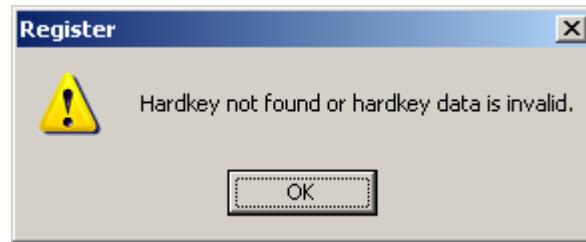
Upgrading the Current License

To upgrade your current IWS license, perform the following steps:

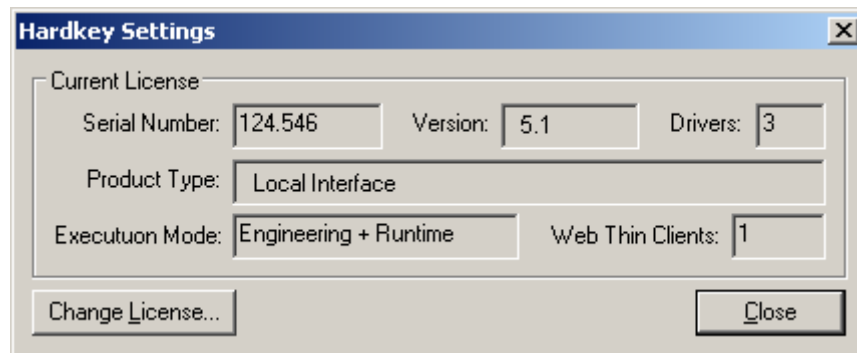
1. Close all InduSoft Web Studio development and runtime modules.
2. Ensure the Hardkey is connected to the parallel port (*LPT1*) or to the USB interface from the computer where you installed IWS.
3. Execute the *Register* module by selecting Start Programs InduSoft Web Studio  Register.
4. When the *Protection Manager* dialog displays (see figure), click (*enable*) the Hardkey radio button in the *Protection Type* section and click the Check button.



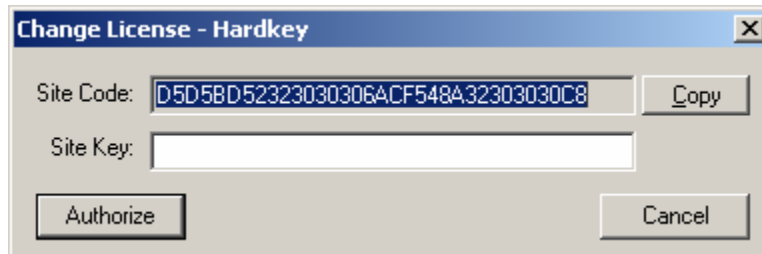
- If a valid Hardkey *is not* connected to the computer's parallel port (LPT1) or to the USB interface, the following error message displays:



- If a valid Hardkey *is* connected to the computer's parallel port (LPT1) or to the USB interface, the *Register* module opens the *Hardkey Settings* dialog (see the following figure), which displays the current license settings recorded on the Hardkey.

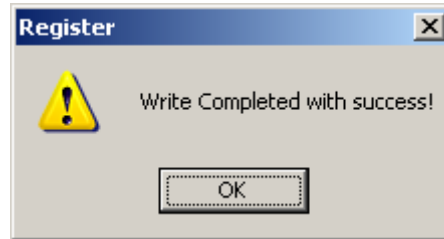



5. Click the Change License button on the *Hardkey Settings* dialog.



6. When the *Change License – Hardkey* dialog displays, copy the code information from the Site Code text box and send it to your software vendor.
7. Your software vendor should send back a *Site Key* that matches the *Site Code*. Type this Site Key into the Site Key field of the *Change License – Hardkey* dialog and then click the Authorize button.

You will be prompted to confirm the operation. If the program accepts (validates) your Site Key, the following message displays:



 **Note:** If your new Site Key is not valid, an error message displays. If this happens, double-check that you entered the Site Key correctly. If you entered the key correctly and still receive an error message, contact your software vendor for assistance.


You can upgrade any license setting (*Product Type, Execution Mode, or Number of Web Thin Clients*) simultaneously supported by the server, or upgrade the software version that is being supported currently. The upgrade cost will depend on your current license settings and the settings of the upgrade license.

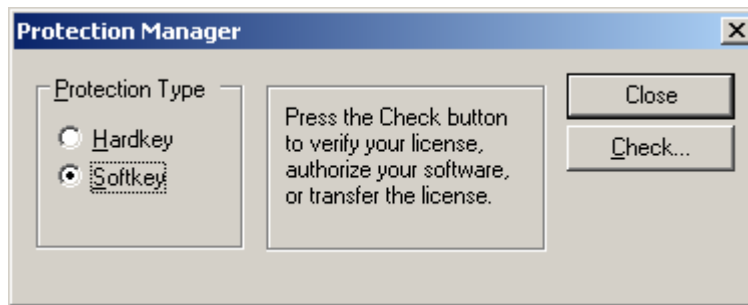
Installing a SoftKey License for InduSoft Web Studio

This section explains how to install and upgrade a SoftKey license for IWS (on Win NT/2000/XP).

Installing a New License

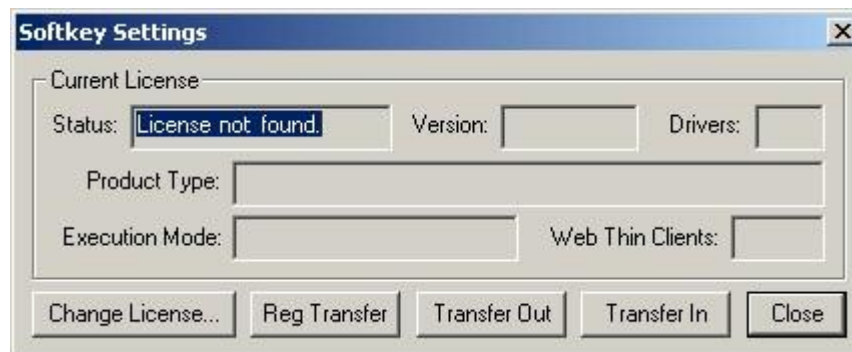
To install a new SoftKey license for IWS, use the following steps:

1. Install InduSoft Web Studio on your computer.
2. Execute the *Register* module by selecting Start Programs InduSoft Web Studio  Register.
3. Click (*enable*) the Softkey radio button in the *Protection Type* group, and then click the Check button.



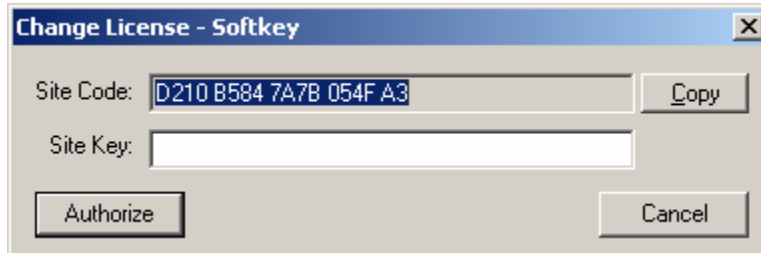
The *Softkey Settings* dialog displays.

- If you have not previously installed a license on your computer, the Status text box displays a License **not found** message (as shown in the following figure).



- If you already have a valid InduSoft Web Studio Softkey license installed, the current license settings display.
4. Click the Change License button on the *Softkey Settings* dialog.

- When the *Change License – Softkey* dialog displays, copy the code information from the Site Code text box and send it to your software vendor.



- Your software vendor will send back a Site Key that matches this Site Code. Type the Site Key into the Site Key field of the *Change License – Softkey* dialog and then click the *Authorize* button.

You will be prompted to confirm the operation. If the program accepts (validates) your Site Key, the following message displays:



Note: If your new Site Key is not valid, an error message displays. If this happens, double-check that you entered the Site Key correctly. If you entered the key correctly and still receive an error message, contact your software vendor for assistance.

- Close the *Register* module and run InduSoft Web Studio.

Upgrading the Current License

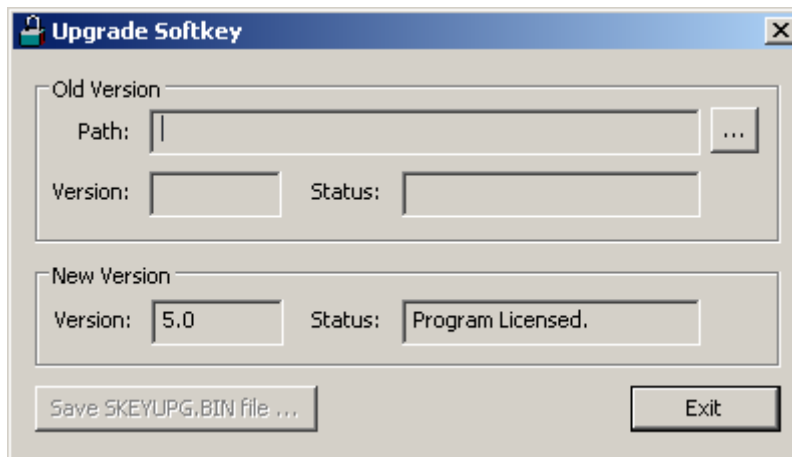
To upgrade your current IWS license, use the following steps:

1. Before upgrading a Softkey license, you must re-install InduSoft Web Studio on the same computer where you installed the previous license.

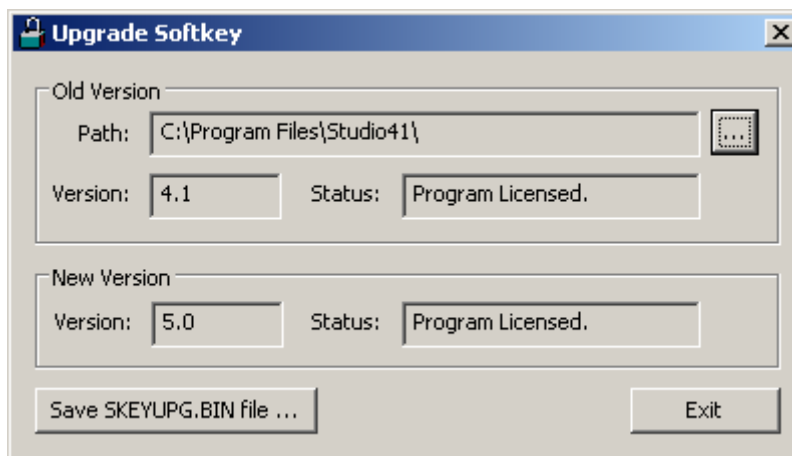
⚠ Caution: *Do not uninstall* InduSoft Web Studio *before getting an upgraded license from your software vendor* or you will lose your current license and it will not be possible to upgrade. (You will have to order a new license.)

2. From the newly installed version of InduSoft Web Studio, open the \BIN subfolder and run the **SKEYUPG.EXE** program.

The *Upgrade Softkey* dialog displays:

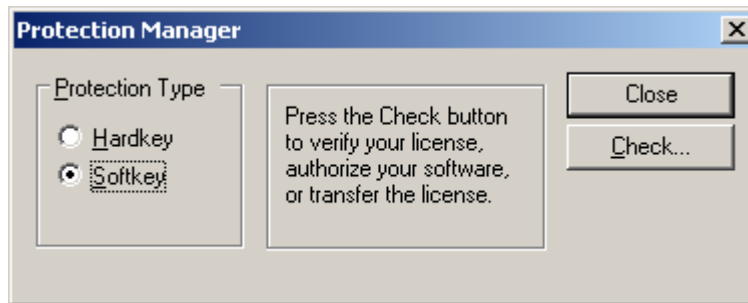


3. In the *Upgrade Softkey* dialog, click the ... button. When the dialog displays, select the path (location) where the previous (already licensed) version of IWS was installed, and close the dialog. The specified path information automatically displays in the Path text box in the *Old Version* section.



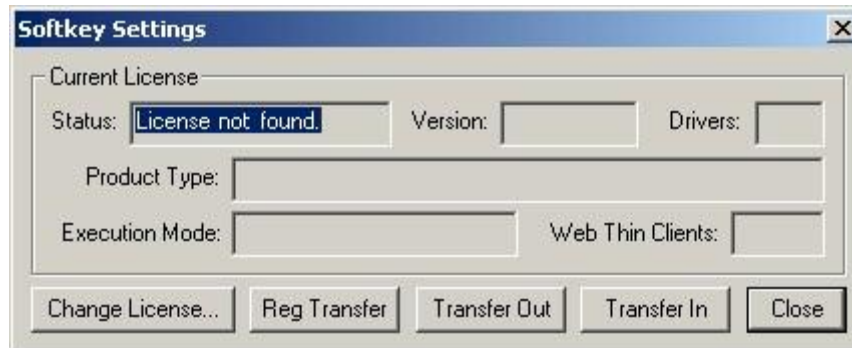
4. Click the Save SKEYUPG.BIN file button to save the information necessary to generate the upgraded license.

5. Copy the `SKEYUPG.BIN` file from the directory where you executed the `SKEYUPG.EXE` program and send it to your software vendor.
6. Your software vendor will send you a Site Key matching the information saved in the `SKEYUPG.BIN` file.
7. Execute the *Register* module (Register) for the newly installed version of InduSoft Web Studio (where you executed the `SKEYUPG.EXE` program to generate the `SKEYUPG.BIN` file).
8. When the *Protection Manager* dialog displays (see the following figure), click (*enable*) the Softkey button in the *Protection Type* section and click the Check button.

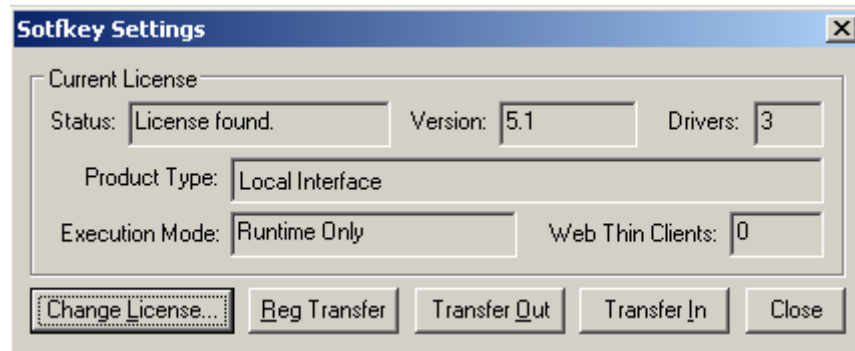


The *Softkey Settings* dialog displays.

- If you have not previously installed a license on your computer, the Status text box displays a **License not found** message (as shown in the following figure).

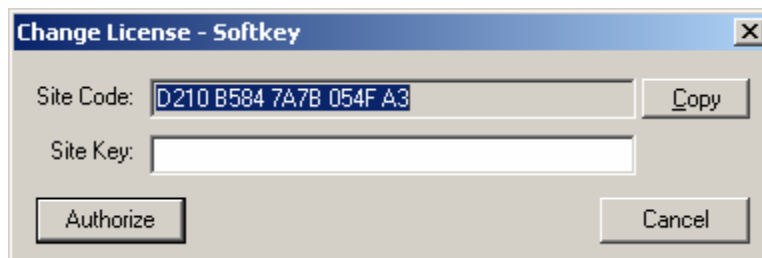


- If you already have a valid InduSoft Web Studio Softkey license installed, the current license settings display.



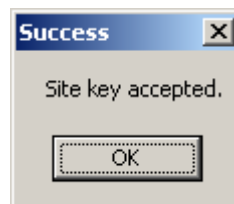
You can upgrade any license setting (*Product Type, Execution Mode, or Number of Web Thin Clients*) simultaneously supported by the server, or upgrade which software version is being supported. The upgrade cost will depend on your current license settings and the settings of the upgrade license.

9. In the *Softkey Settings* dialog, click the *Change License* button to open the *Change License – Softkey*.



10. Type the *Site Key* sent by your software vendor into the *Site Key* field of the *Change License – Softkey* dialog.
11. Click the *Authorize* button.

If the *Site Key* is accepted (validated), the following message displays:




Note: If the new *Site Key* is not valid, an error message displays. If this happens, verify that you entered the *Site Key* correctly. If you typed the *Site Key* correctly and still receive an error message, contact your software vendor for further assistance.

12. Close the *Register* module and run InduSoft Web Studio.

Installing a SoftKey License for CEView

There are two ways to register a CEView license on your WinCE device:


- **Locally:** Using the *Remote Agent* from the WinCE device as the interface.
- **Remotely:** Using InduSoft Web Studio to send the license to the WinCE device.

 **Note:** You can purchase some WinCE devices with the *CEView* license already loaded. Consult your software vendor about this possibility.

Installing or Upgrading a License (Locally)

To install a new (or upgrade an existing) *CEView* SoftKey license (locally), use the following procedure:

1. Download the *Remote Agent* program (**CESERVER.EXE**) into the \<Non-Volatile Folder> path of the WinCE device. The \<Non-Volatile Folder> must retain this data after you reboot the WinCE device.


 **Note:** The \<Non-Volatile Folder> path can vary with each WinCE device manufacturer.


After installing IWS on the WinNT/2000/XP computer, the *Remote Agent* program file (**CESERVER.EXE**) is stored in the following path:

<InduSoft Web Studio Path>\Redist\<WinCE version>\<Platform>\BIN\CESERVER.EXE

Where:

- **<InduSoft Web Studio Path>** is the directory where you installed IWS (for example, C:\Program Files\InduSoft Web Studio\).
- **<WinCE version>** indicates the operating system version (for example, CEView for Windows CE v3.0, WinCE 4.0 for Windows CE v4.0, WinCE 4.1 for Windows CE v4.1, and so forth).
- **<Platform>** is the WinCE device processor type (for example, x86).

 **Note:** In some WinCE devices, the \<Non-Volatile Folder> points to a *FlashCard* memory that is connected to the device. Also, before downloading the *Remote Agent* (**CESERVER.EXE**) to your WinCE device, be sure it is not already loaded in the \<Non-Volatile Folder>.

 **Tip:** There are several ways to download the *Remote Agent* program (**CESERVER.EXE**) to a WinCE device.

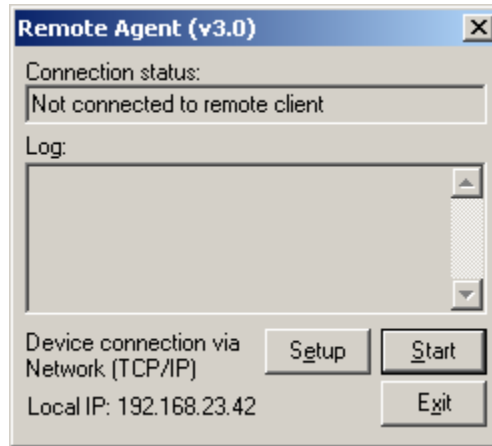
- You can use the Microsoft *ActiveSync*[®] utility to download/upload files from a WinNT/2000/XP station to a WinCE device. You can download *ActiveSync* from the Microsoft Web site at no charge.
- You can use the following command syntax to map a shared folder from a WinNT/2000/XP computer to most WinCE devices:

```
net use [<Local Name>] [Remote Name] [/user:<UserName>]
```

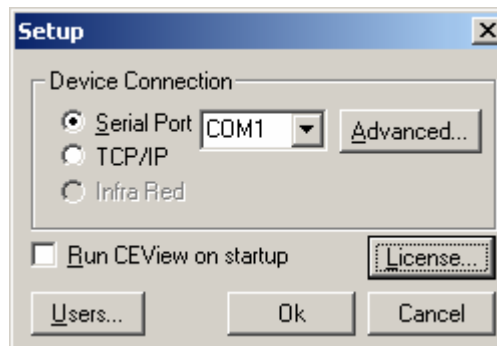
After executing this command successfully, open a *Command Prompt* window and use a **COPY** command to copy files to the WinCE device.

Tip: We *strongly* recommend that you configure the WinCE device to execute the *Remote Agent* program automatically when you power on the WinCE device. See the WinCE device manufacturer's documentation for information about how to configure the *Startup* program on the device.

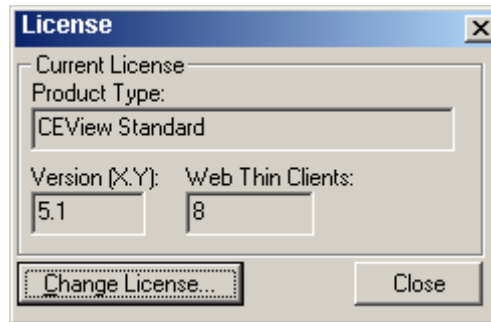
2. If the *Remote Agent* program (**CESERVER.EXE**) does not start automatically when you power on the WinCE device, you can run it manually from the `\<Non-Volatile Folder>`.



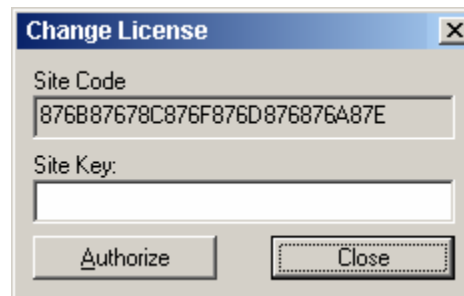
3. From the *Remote Agent* dialog, click the Setup button to open the *Setup* dialog (see following figure).



4. On the *Setup* dialog, click the License button to open the *License* dialog:

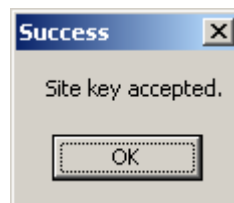


5. Click the Change License button to open the *Change License* dialog:



6. Copy the site code information (provided in the **Site Code** text box) and send it to your software vendor.
7. Your software vendor will send back a *Site Key* that matches this *Site Code*. Type the Site Key into the Site Key field on the *Change License* dialog, and click the Authorize button.

If the Site Key is accepted (validated), the following message displays:

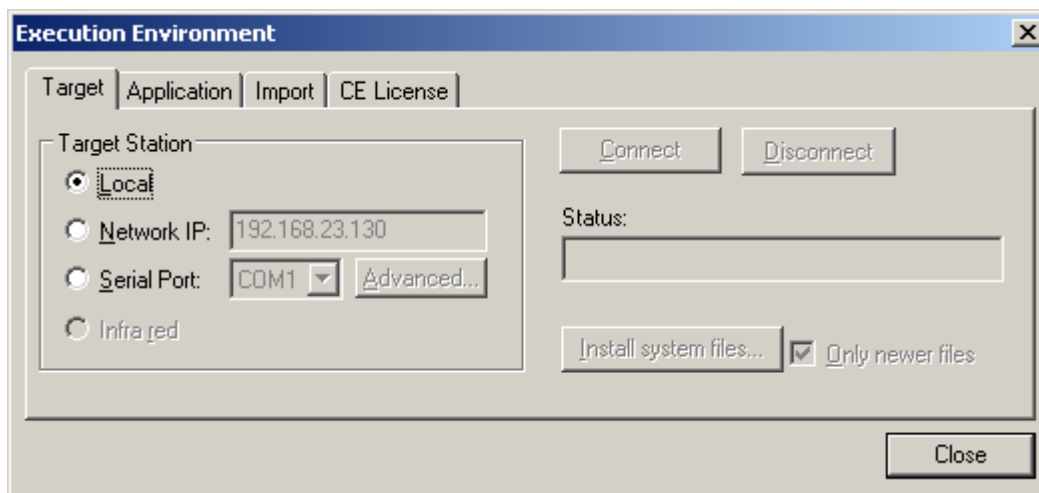


Note: If the new *Site Key* is not validated, an error message displays. If this happens, double-check that you entered the Site Key correctly. If you typed the key correctly and get an error message, contact your software vendor for further assistance.


Installing or Upgrading a License (Remotely)

To install a new (or upgrade an existing) *CEView* SoftKey license (remotely), use the following procedure:

1. Execute the three first steps described in the previous section.
2. In the *Setup* dialog, specify the Device Connection type by clicking (*enabling*) the Serial Port or TCP/IP radio button. (If you enable Serial Port, you also must select a port from the combo-box list). Click OK to close the dialog.
3. Run InduSoft Web Studio on the WinNT/2000/XP station and connect this station to the WinCE device using either a serial or TCP/IP link.
4. From the IWS main menu bar, select Project Execution Environment to open the *Execution Environment* dialog (as shown in the following figure).

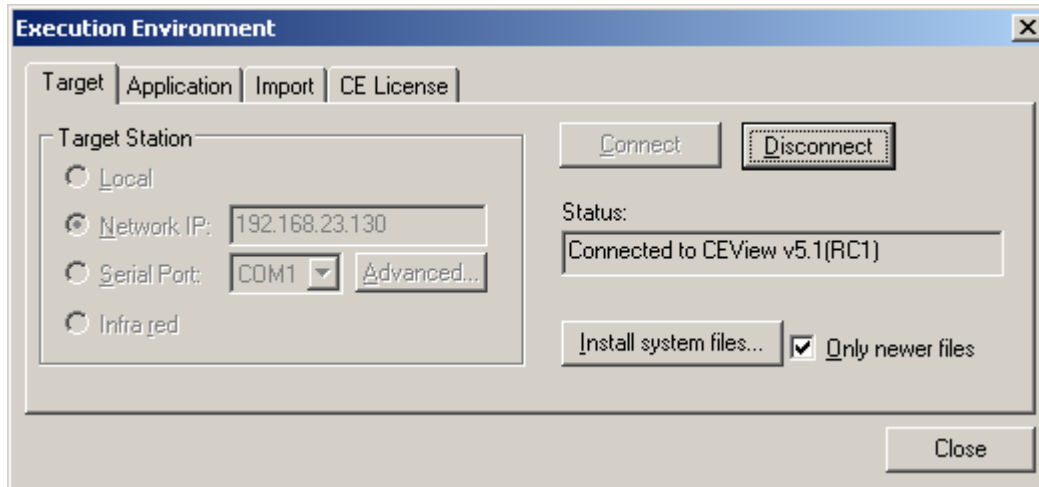


5. Specify a target station by clicking one of the following radio buttons in the *Target Station*:
 - Local
 - Network IP and type the IP address into the field provided
 - Serial Port and select a port from the combo-box list provided
6. When the Connect button becomes active, click the button to connect to the WinCE device on which the *Remote Agent* is running. (If you select Network IP, you must also enter the IP address in the text box provided.)

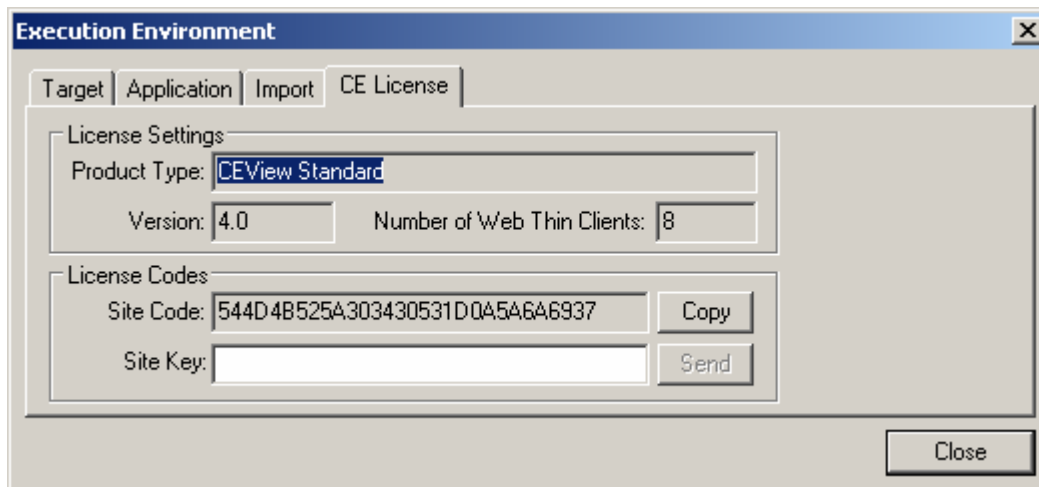
 **Tip:** TCP/IP links provide better communication performance than Serial links.

The Status field must display the following message:

Connected to CEView <CEView Version>



7. Select the *CE License* tab to see which license settings are currently installed on your WinCE device.



8. From the License Codes section of the *Execution Environment* dialog, copy the information from the Site Code field and send it to your software vendor.
9. Your software vendor will send you a *Site Key* that matches this *Site Code*. Type this Site Key into the Site Key field.
10. Click the Send button to send the code to the *Remote Agent* running on the WinCE device.

The *Remote Agent* program will attempt to install the new license using the Site Key sent from InduSoft Web Studio. If the Site Key is accepted (validated), the following message displays:



Note: If the new Site Key is not valid, an error message will display. If this happens, double-check that you typed the *Site Key* correctly. If you entered the Site Key correctly and still receive an error message, contact your software vendor for further assistance.

Caution: After sending the license to the WinCE device, be sure to save its registry settings. If you do not save these settings, you will lose the license after rebooting the device.

Revision History

Revision	Author	Date	Comments
A	Fabio Terezinho	Mar 25, 2002	Initial Version
B	Fabio Terezinho	May 2, 2002	Lay-out revision
C	K. C. Francis	Jan. 23, 2003	Spelling revisions
D	Fabio Terezinho	Apr. 1, 2003	Changed the Engineering Only execution mode to execute the run-time tasks for 72 hours, instead of 24 hours. This change is valid for IWSv5.1+SP3 and higher.
E	Fabio Tereznho	October 3, 2003	<ul style="list-style-type: none">▪ Layout revision▪ Added support to Hardkeys for the USB interface (IWS v6.0 or higher)
F	Fabio Tereznho	April 16, 2003	<ul style="list-style-type: none">▪ Included additional information in the Product Types chapter.
G	Fabio Tereznho	January 6, 2006	<ul style="list-style-type: none">▪ Included Duration option for Softkey.▪ Lay-out revision.